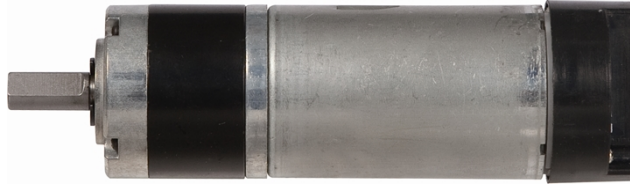


36JXE30K/36ZY57 Φ36 行星减速器, 允许转矩范围: 0.3N.m~3.0N.m
36mm OD Planetary Gearbox,
Permissible Load Range: 0.3N.m~3.0N.m

可在两种材料的内齿圈中进行选择: 粉末金属 (型号 36JXF30K), 金属 (型号 36JXE30K)
Ring gear can be selected within the two materials: Powder metal (Type:36JXF30K), Metal (Type:36JXE30K)



● 电动机主要技术参数 Motor Technical Data

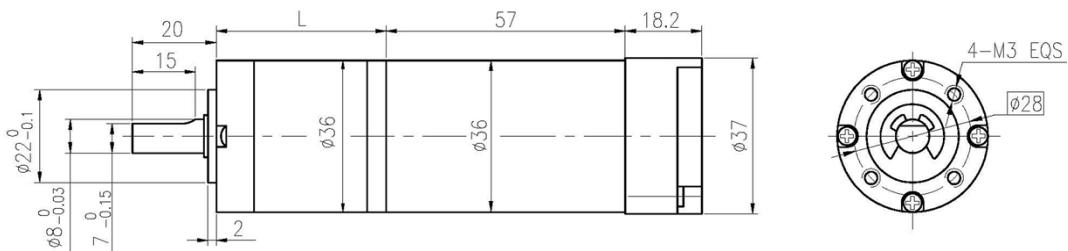
电机型号 TYPE	额定电压 Rated voltage VDC	空载转速 No-load speed r/min	空载电流 No-load current mA	额定转速 Rated speed r/min	额定转矩 Rated torque mN.m	输出功率 Output power W	额定电流 Rated current A	堵转力矩 Stall torque mN.m	堵转电流 Stall current A
36ZY57-2442	24	4200	120	3600	19	7	0.52	97	2.8

● 齿轮减速电机主要技术参数 Gear Motor Technical Data

配置 36ZY57-2442 直流电机 (36ZY57-2442 DC Motor)

减速比 Reduction ratio	3.7	5.2	14	19	27	51	71	100	139	181	218	253	305	354
减速级数 Number of gear trains	1	1	2	2	2	3	3	3	3	4	4	4	4	4
减速器长度(L) Length(L) mm	26.5	26.5	33.6	33.6	33.6	40.5	40.5	40.5	40.5	47.4	47.4	47.4	47.4	47.4
空载转速 No-load speed r/min	1132	811	300	221	156	82	59	42	30	23	19	17	14	12
额定转速 Rated speed r/min	970	695	257	189	133	71	51	36	26	20	17	14	12	8.5
额定转矩 Rated torque N.m	0.063	0.089	0.22	0.29	0.42	0.71	0.98	1.4	1.9	2.2	2.7	3	3	3
最大瞬间允许负载 Max. permissible load in a short time N.m	1.0	1.0	3.5	3.5	3.5	7.5	7.5	7.5	7.5	9	9	9	9	9

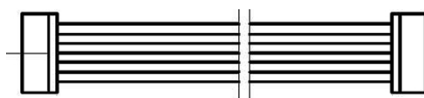
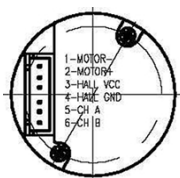
● 外形和安装尺寸 Dimensions



● 配置磁编码器 Magnetic Encoder

Model: CBM36-4 2channels, CW/CCW, 4PPR

Flat cable length 350mm



1. MOTOR-
2. MOTOR+
3. HALL SENSOR Vcc
4. HALL SENSOR GND
5. HALL SENSOR A Vout
6. HALL SENSOR B Vout